

# mass integrated

global part distribution • product lifecycle partner  
excess inventory management • value-ad service provider



Data sheet provided by Mass Integrated

[massintegrated.com](http://massintegrated.com) • [displayalliance.com](http://displayalliance.com)

Please call +1.978.465.6190  
Email: [sales@massintegrated.com](mailto:sales@massintegrated.com)



ISO 9001: 2008

Mass Integrated complies with all DMCA takedown notices. Please send a formal DMCA Takedown Notice to Mass Integrated Systems, Inc. • 18 Henry Graf Jr. Road, Unit 1 • Newburyport, MA 01950.

## LM8V31

Color STN-LCD Module  
(Handheld PC)

### Features

- 20 cm [7.7"] VGA format
- Thin structure (9.5 mm) & lightweight (310 g)
- Built-in touch panel and CCFT backlight
- Low power consumption (1.6 W)

### Specifications

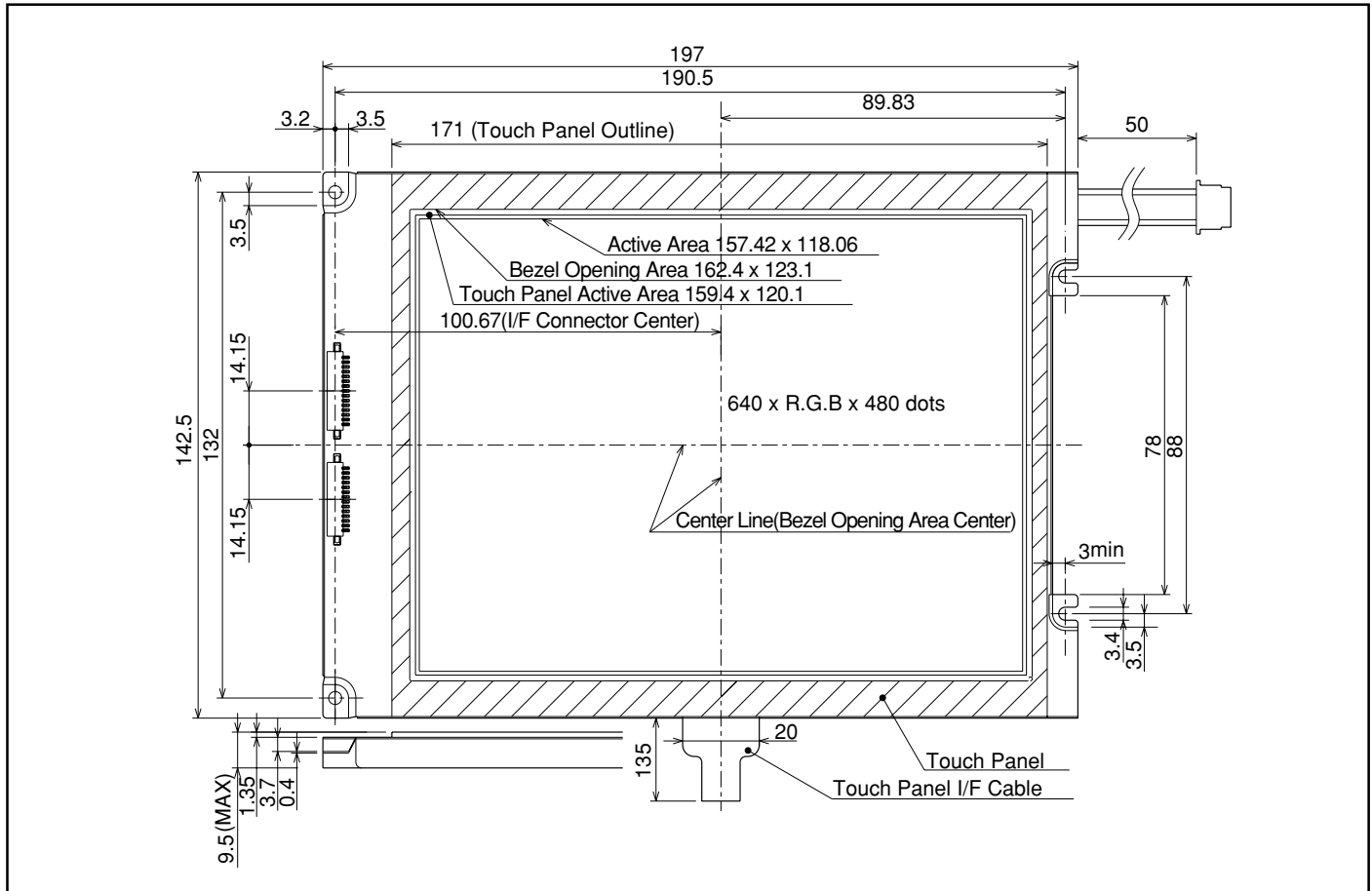
Parameter		Unit
Display size	20 [7.7]	cm ["]
Dot format (H x V)	640 x RGB x 480	dot
Dot pitch (H x V)	0.082 x 0.246	mm
Active area (H x V)	157.4 x 118.0	mm
Panel type	*1	-
Panel mode	Transmissive	-
Contrast ratio	40 : 1	-
Response time	350	ms
Brightness	55	cd/m <sup>2</sup>

Parameter		Unit
Backlight type	1CCFT(E)	-
Duty ratio	1/240	-
Logic voltage	3.3 Vcon	V
Power consumption	1 600	mW
Outline dimensions (W x H x D)	197.0 x 142.5 x 9.5	mm
Weight	310	g
Operating temperature	0 to +40	°C
Storage temperature	-25 to +60	°C

\*1...Triple Super Twisted Nematic

### Outline Dimensions

unit : mm



In the absence of confirmation by device specification sheets, SHARP takes no responsibility for any defects that may occur in using any SHARP devices shown in catalogs, data books, etc. Contact SHARP in order to obtain the latest device specification sheets before using any SHARP device. Specifications are subject to change without notice for improvement.